

Table with columns for call sign, frequency, power, and other technical details. Includes sections for various countries like Argentina, Brazil, Chile, Colombia, Ecuador, and the United States.

Table with columns for organization/individual name, numerical values, and district/region codes. Includes sections for District 5, District 6, District 7A, District 8, and District 9. Rows list various entities like WBPJH, KM3MT, WA2TDE, etc., with associated numbers and codes.

Table listing various countries and regions with their respective codes and values. Columns include country codes (e.g., JA3AOP, JN3TMM), values (e.g., 1,129,848), and other identifiers. Countries are grouped by continent: Africa, Asia, Europe, Middle East, Oceania, and various islands.

Table with columns for call sign, frequency, power, and other parameters. Includes entries for ZL1BBW, ZL4NY, ZL2MM, etc.

Philippines

Table with columns for call sign, frequency, power, and other parameters. Includes entries for DU3T, 4E3X, *41EBD, *411BNC, etc.

SOUTH AMERICA

Argentina

Table with columns for call sign, frequency, power, and other parameters. Includes entries for LV1D, LV10MT, LU9OZX, LU8DFM, etc.

Brazil

Table with columns for call sign, frequency, power, and other parameters. Includes entries for PT5J, PY2WH, PY2KX, etc.

Table with columns for call sign, frequency, power, and other parameters. Includes entries for PY5DK, PY2AE, PW2L, etc.

Table with columns for call sign, frequency, power, and other parameters. Includes entries for PY5ZH, PY2DY, PT4Z, etc.

Table with columns for call sign, frequency, power, and other parameters. Includes entries for *PU2USK, *PY2ZFRQ, *PU2OQ, etc.

Table with columns for call sign, frequency, power, and other parameters. Includes entries for *PU7IRR, *PY2MOR, *PU4BOT, etc.

Table with columns for call sign, frequency, power, and other parameters. Includes entries for *PY1MK, *PY2YXB, *PY5YB, etc.

Table with columns for call sign, frequency, power, and other parameters. Includes entries for *PY2YTC, *PY2COY, *PS8ET, etc.

Table with columns for call sign, frequency, power, and other parameters. Includes entries for CE1TT, CE3NT, CE3VTR, etc.

Table with columns for call sign, frequency, power, and other parameters. Includes entries for HK4W, HK3EA, etc.

Table with columns for call sign, frequency, power, and other parameters. Includes entries for SO2U, SP3TKW, PY2BK, etc.

Table with columns for call sign, frequency, power, and other parameters. Includes entries for *SM2SPN, *SM4EVM, *SM2SPN, etc.

Table with columns for call sign, frequency, power, and other parameters. Includes entries for *SM2SPN, *SM4EVM, *SM2SPN, etc.

Table with columns for call sign, frequency, power, and other parameters. Includes entries for *SM2SPN, *SM4EVM, *SM2SPN, etc.

Table with columns for call sign, frequency, power, and other parameters. Includes entries for *SM2SPN, *SM4EVM, *SM2SPN, etc.

Table with columns for call sign, frequency, power, and other parameters. Includes entries for *SM2SPN, *SM4EVM, *SM2SPN, etc.

Table with columns for call sign, frequency, power, and other parameters. Includes entries for FA0AWH, SNOE, JH1APZ, etc.

QRP ASSISTED NORTH AMERICA

Table with columns for call sign, frequency, power, and other parameters. Includes entries for United States District 1, District 4, etc.

ASIA

Table with columns for call sign, frequency, power, and other parameters. Includes entries for Asiatic Turkey, China, Israel, etc.

EUROPE

Table with columns for call sign, frequency, power, and other parameters. Includes entries for Austria, Belgium, Bosnia-Herzegovina, etc.

Croatia

Table with columns for call sign, frequency, power, and other parameters. Includes entries for IZ3NVR, 9A4QV, etc.

Czech Republic

Table with columns for call sign, frequency, power, and other parameters. Includes entries for OK2FD, OK1DMP, etc.

Denmark

Table with columns for call sign, frequency, power, and other parameters. Includes entries for OZ8OM, etc.

England

Table with columns for call sign, frequency, power, and other parameters. Includes entries for G4ABX, G1G, etc.

Greece

Table with columns for call sign, frequency, power, and other parameters. Includes entries for SV1NK, etc.

Hungary

Table with columns for call sign, frequency, power, and other parameters. Includes entries for HG5O, etc.

Italy

Table with columns for call sign, frequency, power, and other parameters. Includes entries for IZ5CMI, IZ2OKG, etc.

Lithuania

Table with columns for call sign, frequency, power, and other parameters. Includes entries for LY2OU, etc.

Luxembourg

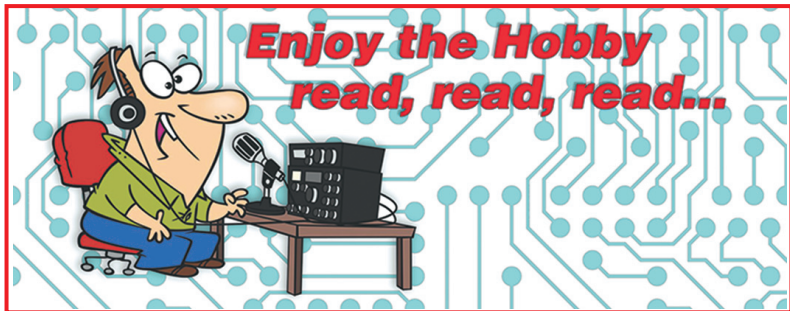
Table with columns for call sign, frequency, power, and other parameters. Includes entries for LX3AT, etc.

Netherlands

Table with columns for call sign, frequency, power, and other parameters. Includes entries for PE2K, etc.

Table with multiple columns listing radio call signs (e.g., EU1VA, ON7QC), countries (e.g., Belarus, Belgium, Bulgaria, etc.), and associated frequencies or call sign details. The table is organized into several regional or country-based groups, including European Russia, France, Greece, Hungary, Ireland, Italy, Isle of Man, Lithuania, Luxembourg, Moldova, Netherlands, Northern Ireland, Norway, Poland, Portugal, Republic of Kosovo, Romania, Sardinia, Scotland, Serbia, Sicily, Slovenia, Spain, Sweden, Switzerland, Ukraine, Wales, Oceania, and Brunei Darussalam. Each entry typically includes a call sign and numerical values.

YB4PE 24,738 117 31 62 YB8RV 23,925 181 30 45 YB0KXO 22,302 105 48 70 YB9YKU 18,944 122 22 42 YB1RQX 10,332 64 24 39 YB3BLJ 10,241 77 15 34 YB85HY 6,156 102 11 43 YB2SPR 5,159 34 14 36 YB9YS 2,438 59 10 13 YC2DMA 2,412 51 16 20 YC1CUN 2,093 36 10 13 YB2XDU 1,400 30 10 10 YC7LTE 1,232 23 10 12 YB1EOL 861 26 8 13 *YB0RW 87,048 370 41 52 *YB9GV 79,776 423 22 50 *YC9DP 73,359 220 51 92 *YC3RUL 61,656 307 26 58 *YC5NBY 26,208 104 41 71 *YCOOXA 20,398 104 33 61 *YB1KEL 18,096 151 26 61 *YB3BGM 16,461 113 18 41 *YB4YV 16,396 113 18 41 *YCBFEE 15,189 102 26 35 *YB1DUU 14,356 118 24 50 *YB8JEC 11,124 94 21 33 *YB3ATK 10,620 120 26 33 *YC2YWF 9,744 72 20 36 *YB9CPZ 9,630 79 16 29 *YB7JZ 8,927 99 14 36 *YB0ULI 7,830 60 23 33 *YB5UAF 7,085 64 28 37 *YC2BZD 6,552 56 18 34 *YB5XOB 5,632 53 16 28 *YB2CTE 5,152 49 20 26 *YC7LXI 4,445 73 14 21 *YB5MB 4,081 77 21 32 *YB3UG 3,888 53 13 23 *YB1HDR 2,820 38 7 23 *YC3RNV 2,160 32 9 18 *YB7VGB 2,145 27 19 19 *YB8FX 1,200 39 9 11 *YD9UAN 1,166 28 11 11 *YC2COM 898 63 10 14 *YB1AWS 780 24 6 9 *YF9BD 756 22 8 10 *YB2YEN 736 15 11 12 *YB1EIG 527 29 7 10 *YB8FY 518 22 5 9 *YB5HPT 374 26 7 10 *YB7CV 320 20 3 5 *YD2HFB 220 12 4 6 *YD3AU 49 4 4 4 *YC8AKU 27 7 4 5 *YB1TIA 3,600 37 16 24 *YD8SPY 2,349 37 11 16	4F3FSK 266 18 3 4 *DV1UCX 93,730 559 23 47 *DV1DLX 76,024 422 25 43 *DW7NDM 42,631 209 37 52 *DU1VX 15,946 105 22 45 *DU1VNA 11,152 126 15 26 *DU2R 5,497 93 11 12 *DW2FCR 2,160 57 8 12 *DU8WP 435 49 5 10 *4I1MVI 35 9 3 4 *DV9IGT 672 18 6 8	266 18 3 4 93,730 559 23 47 76,024 422 25 43 42,631 209 37 52 15,946 105 22 45 11,152 126 15 26 5,497 93 11 12 2,160 57 8 12 435 49 5 10 35 9 3 4 672 18 6 8	*PU8PJT 319 61 10 19 *PY2OF 169 7 6 7 *PY2VTR 140 9 7 7 *PY2BN 111,706 418 32 69	Chile 1,374,720 2138 77 163 (OP: CE3EIO) CE2LE 494,382 1215 59 99 CE4PS 307,165 975 28 87 XQ3SK 232,824 776 49 60 CE3TL 18,350 159 18 32 *CE1UGE 85,790 324 47 68 *CE5UBR 64,015 426 18 41 *CB3CE 32,893 167 41 56 (OP: CE3KWA) *CA2SLJ 26,455 260 18 37 *XQ5CIE 26,398 174 19 48 *XQ5OS 25,550 170 24 49 *CE4CBJ 17,370 118 41 49 *CE6FYN 7,869 114 16 27 *CA6NFR 2,544 82 19 29 *CE2CFK 2,146 62 16 21 *CE3PCG 1,400 28 17 18 (OP: CE3BC)	Wallis & Futuna Islands 117,856 290 59 95 *FW1JG	SOUTH AMERICA Argentina 282,987 823 45 98 LU1VM 204,864 820 28 69 LUBMY 86,576 605 40 72 LQSA 73,130 278 31 72 *LQSD 169,078 737 22 69 (OP: LU8DA) *LV1E 77,271 271 50 79 *LW3DBW 47,005 260 24 61 *LU9LZR 13,416 120 40 46 *LV9YK 9,520 105 17 23 *LU9SC 4,560 102 20 28 *LU7AOW 2,144 57 16 16 *LU5ME 752 40 7 9 *LU1RAF 364 33 5 8 *LV4V 20,916 151 15 48 (OP: LU4VZ)	Colombia 8,476 69 17 35 *HK4CM 7,824 67 17 31 *HK4RB	Ecuador 69,036 564 16 28 *HC2TKV	Peru 1,228,766 2125 67 135 OA4SS 545,532 1266 47 122 OA4DAG	Suriname 725,000 2218 27 89 *PZ2YT	Uruguay 82,288 310 53 86 *CX9AU	Venezuela 28,596 170 23 56 *YV1GIV	YOUTH NORTH AMERICA United States District 2 825 14 11 14 District 4 144,504 255 65 158 *NR1K 36,366 125 31 83 *NOJMP 9,675 63 20 55 *K4IEY 975 16 11 14 *WBQI 384 9 7 9 *KQ4AKR	District 6 352 9 7 9 *KN6VGL District 8 540,792 628 83 250 District 9 142,064 259 60 148 *KE8HV *KE8RJU	*N8AJM 29,972 104 41 77 *NC8R 14,630 121 32 45 District 9 147,500 246 87 163 KD9V 9,936 73 23 49 K9ZV District 0 35,646 173 23 55 *KE0WPA Canada - District 3 131,338 287 61 133 *VE3GKT 76,428 239 41 91 *VE3OMV	France 249,240 685 35 99 F4IDC *SV8SYK Greece 19,602 120 30 51 Hungary 157,740 300 75 164 *HA1BB 735 53 4 17 *HABMB 106 15 4 18 *HGCK Ireland 14 4 3 4 *E18KW Italy 130,830 599 44 166 *I13HKZ 1,224 31 9 15 *IU7QCK Lithuania 167,014 385 58 168 *LY5AX 216 18 3 9 *LY3LB Luxembourg 757,520 1834 41 129 (OP: F4HWS) LX7I Netherlands 23,205 183 27 78 *PD9W Poland 180,832 500 60 208 *SP3GTP 64,413 276 40 113 *SP3MT 25,520 182 26 96 *SP4DIR 3,268 163 15 49 *SP3DS 3,268 163 15 49 *SQ9ALW 2,204 40 12 26 *SQ9B 40 8 3 7	Romania 22,288 186 21 55 *YO5DBM 5,775 87 12 43 Serbia 175,890 1185 27 103 YT5DXX Spain 25,839 158 27 72 *EA2ESK OCEANIA Australia 896 21 14 14 *VK4OTZ Indonesia 4,440 69 16 24 *YC5AKO 4,312 36 21 28 *YC1AUI 2,080 33 11 21 *YD2JWF 313 13 7 8 *YD3CZV 140 8 3 4 *YG3ART 5,328 60 14 22 *YQ1LJT Mariana Islands 922,209 1501 69 150 KH0UA New Zealand 2,940 36 12 18 ZL1CAP	SOUTH AMERICA Brazil 30,261 135 37 70 *PY2POA
--	---	--	---	--	---	--	--	-------------------------------------	---	---------------------------------------	------------------------------------	---------------------------------------	--	--	--	--	---	---



Oops...

1 is the Loneliest Number ... Especially When It's Left Out!

In K4HRK's March article, "A Collapsible Tri-Band Antenna for 6 Meters, 2 Meters, and 70 Centimeters with a 10-Meter Option," we accidentally overstated the SWR of his antenna at the very band edges (leaving out a very important "1."). Under "Performance," the first paragraph should read as follows:

Using my VNA, these are my standing wave ratios on different bands:

- 10 meters – 1:1 center of band and 1.6:1 at the edges
- 6 meters – 1:1 center of the band and 1.9:1 at the edges
- 2 meters – 1.3:1 flat across the band
- 70 centimeters – 1:1 flat across the band

We regret the error and hope this makes you feel even better about trying this antenna!

Check Logs

2EQXSH, 3V8SS, 4X4FL, 4Z4AK, 4Z5ML, 9A2VW, 9A3VM, 9A5W, 9A6TT, 9K2NO, 9K2YD, 9K2YM, A11CK, A6ERN, AG7YX, BA5CW, BD4SDX, BD7OB, BD8ALD, BG2WW, BG3HUT, BG3IPT, BH1MBC, BH5HG, CT1DVV, CT1EPC, CX2AQ, D44PM, DF3OL, DF4FR, DF5RF, DF7AT, DF9HI, DF9XI, DG8OB, DJ4CW, DJ6TK, DJ6YX, DK1DS, DK5OC, DK7A, DL0FIS, DL1YAB, DL2DX, DL3AG, DL5JAG, DL6MRM, DL7JV, DL8TV, DL8WJM, DL9YB, DM1PL, DM4VPF, DMSJBN, DN4PSG, DP0PL, DU8ZN, E740, EA11Q, EA1S, EA2OU, EA3BP, EA3D, EA3RR, EA4EER, EA4EM, EA4LU, EA5YI, EA6SA, EA7DQH, EA7GTJ, EA7P, EA8NR, EC7B, ED8W, EI8KW, EI7CC, EI7KJ, ER90X, ES4RD, EU1FO, EU1KH, EU1LI, EU1ZF, F54E, F4EUG, F4ICR, F4IYB, F6HQF, F8FQJ, G3PXT, G4NXV, G5W, G6MSY, G7COU, GI0LDI, GU4EON, GW4BKG, HA0GK, HA1AG, HA2MM, HA7VK, HA8BE, HA8JV, HA8OZ, HA8TP, HB9DOS, HB9EYP, HB9H, HB9HRJ, HK3CJ, HSOZDY, I0WBX, I3MTM, I10I, IK1YDB, IK8NBE, IQ3TR, IT9AQR, IU2BHI, IU2LWL, IU8JLN, IV3PIS, IV3OKO, IW1ARB, IW1FRU, IW1GEU, IZ1KGI, IZ1UJE, J35X, J46CNX, JH1BNC, JH4RUM, JR2VBK, JS6RTJ, JT1CS, JW7OIA, K0DS, K0GT, K3HW, K3SK, K4RSA, K6ZF, K9FW, KA2MGE, KC5QB, KC7DC, K4QHL, KK7CJV, KM3T, KN0TTU, K04YKW, LA2GKA, LA3T, LA5FBA, LA6YQ, LA9OI, L05R, LU1VDF, LU7MJC, LU8ADX, LY1LB, LY2BA, LY5TJ, LZ1JZ, LZ1MC, LZ1ND, LZ1PUB, LZ1RG, LZ1YF, LZ1YR, M0CVO, M0HFY, M6EAM, N1CFO, N2TPC, N3IQ, N4EFS, N8BE, N8LCL, OE2E, OH1MIE, OH2IS, OH4SS, OH5BQ, OH7CW, OH8SE, OH9W, OK1CZ, OK1ES, OK1TA, OK1WCF, OK2BFN, OK2SG, OK2TJ, OL7K, OM2FY, OM8FM, PA1EJO, PA1TK, PA2LO, PA7JWG, PB8DX, PC3T, PG7V, PP5IP, PP5MG, PU2KMM, PU2MBO, PU2KKK, PU3SDF, PY5DP, R2AA, R4KO, RT7J, RA3TAR, RA3QDX, RA5AW, RA9AMO, RA9AU, RC3J, RM2A, RN3QG, RU2CC, RI7KD, ER90X, ES4RD, EU1FO, EU1KH, EU1LI, EU1ZF, F54E, F4EUG, SA6JOF, SB3JK, SD4C, SF6J, S16V, SM6MSG, SM7IUN, SN2S, SN9AT, SO5O, S05TC, SO6K, SO9I, SO9Q, SP2EWQ, SP2LQP, SP3BP, SP3EMA, SP3J, SP4LVK, SP5AH, SP5GDY, SP5NFZ, SP5RT, SP5Z, SP6CIC, SP6TRX, SP7CWW, SP7JPN, SP7MC, SP8SN, SP8PBJ, SP9DPM, SP9HVV, SP9LAS, SP9WLC, SQ1BSY, SQ5AM, SQ5CPZ, SQ5RTI, SQ7BFS, SQ8L, SQ9ANS, SQ9C, SQ9CX, SQ9MZ, SQ9S, SV1ME, SV2HXV, SV2RSZ, SV4FFL, SV9QCF, SX5P, T1ZNSNU, TK5MH, UA0SR, UA3AGW, UA6ACA, UA6JXB, UA6JQ, UN8PT, UR3CRO, UR5VCW, US5ETV, UT5UHK, UT7JW, VA2EW, VE2KTA, VE3OJU, VE7KFA, VK5MAV, VK6HDY, VU2PTT, VU3XIO, W1PL, W3JL, W4JFK, W5RJR, W6MVT, W6YA, W7CF, W8DON, W8QZA, W8UBA, W8WCM, W1OP, W01Z, YB1ACN, YB1AM, YB1CMJ, YB8MGN, YB8BOM, YC1FGH, YC7HSL, YC8SLX, YC9EN, YO2BCO, YO3IPR, YO4RDW, YO7EY, YO9DF, YU1DW, ZL1JLA, ZL1TM, ZL2AYZ

Disqualified: DM5B (use of spotting as a single-op), E74TM (use of spotting as a single-op), EI7BE (interlock violations), ELUAE (use of spotting as a single-op), FM6KC (self-spotting), HA7UJ (use of spotting as a single-op), HB9EF (use of spotting as a single-op), IJ4FIT (use of spotting as a single-op), IJ5ICR (use of spotting as a single-op), JA2AXB (use of spotting as a single-op), K7WCH (operating out-of-band violations), LZ2ZY (use of spotting as a single-op), NZKH (operating out-of-band violations), PRZE (use of spotting as a single-op), RA9V (use of spotting as a single-op), S51DD (use of spotting as a single-op), S51I (use of spotting as a single-op), S9NB (use of spotting as a single-op), SP4AWE (use of spotting as a single-op)